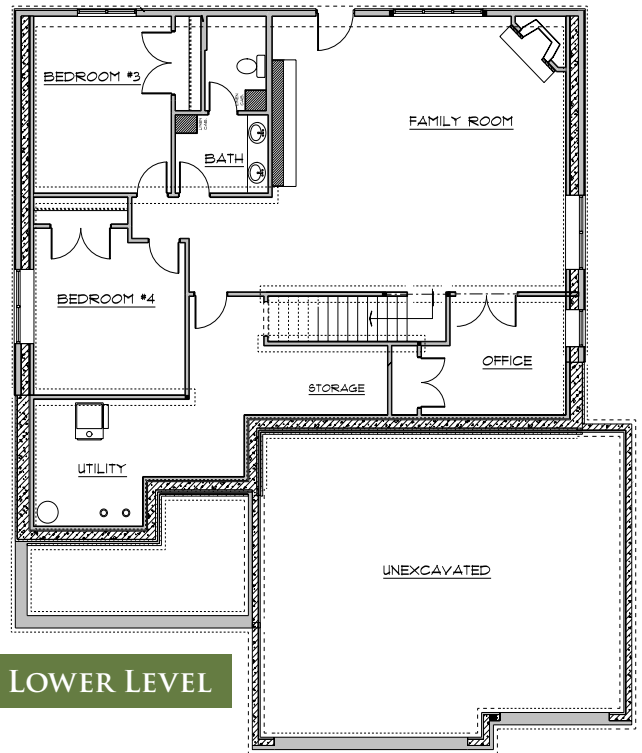
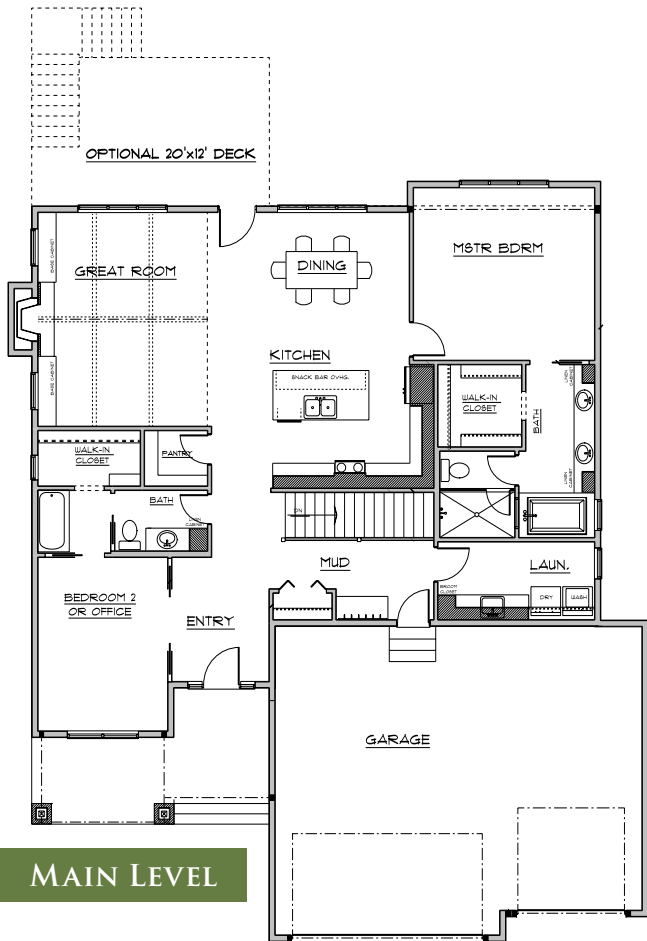


The St. Andrews



- ◇ Open Main Level Floor Plan, Vaulted Ceiling, and Fireplace
- ◇ 4-5 Bedrooms, 3 Bathrooms
- ◇ 2 Flex Rooms Great for Bedrooms or Home Offices

- ◇ 3 Car Garage
- ◇ Walkout Lower Level
- ◇ Lower Level Family Room with Wet Bar & Fireplace
- ◇ 3,300 Finished sq ft



Mark Gagnon, *Owner*
612-599-5376
Mark@NewmarkHomesMN.com

Newmark Homes
#BC008812
NewmarkHomesMN.com

UNIQUELY NEWMARK