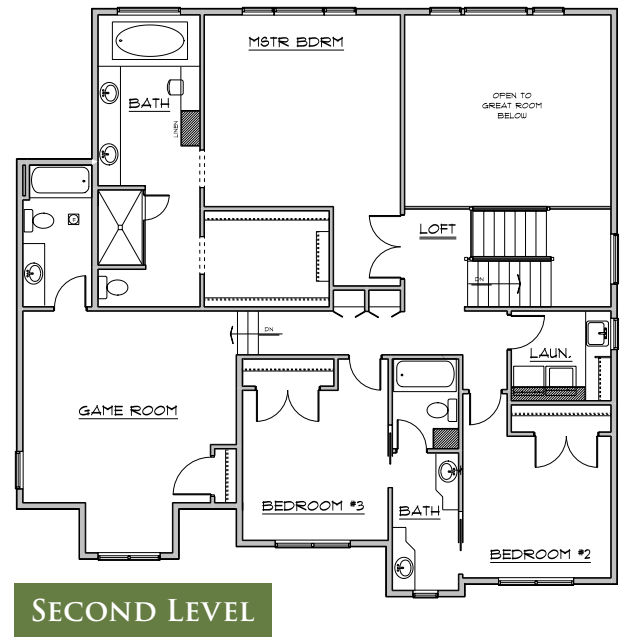
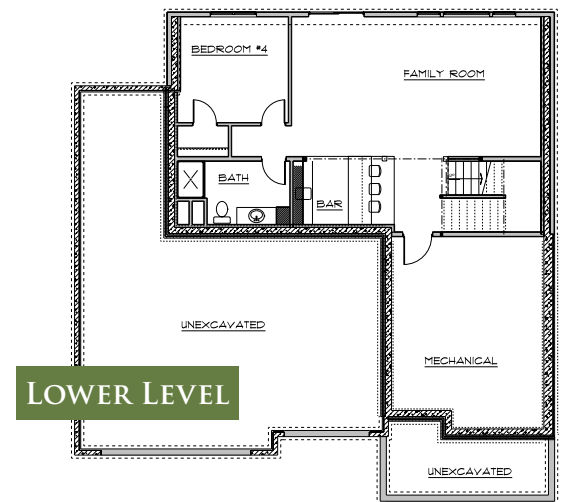




The Cambridge



- ◇ Open Main Level Floor Plan, Large Windows
- ◇ Dramatic 2-Story Great Room with Fireplace and Open Railing
- ◇ Spacious Kitchen with Center Island, Walk-In Pantry
- ◇ Master Bath Suite with Separate Tub and Tile Shower
- ◇ 3-5 Bedrooms, 2.5-4 Bathrooms
- ◇ 3-4 Car Garage + Tandem Garage, Front Porch
- ◇ Large Bonus Room, Jack and Jill Bathroom
- ◇ Walk-out Lower Level – Optional Finish, Wet Bar, Fireplace
- ◇ Main/Upper Levels: 3,400 sq ft; Lower Level: 1,000 sq ft



Mark Gagnon, *Owner*
612-599-5376
Mark@NewmarkHomesMN.com

Newmark Homes
#BC008812
NewmarkHomesMN.com