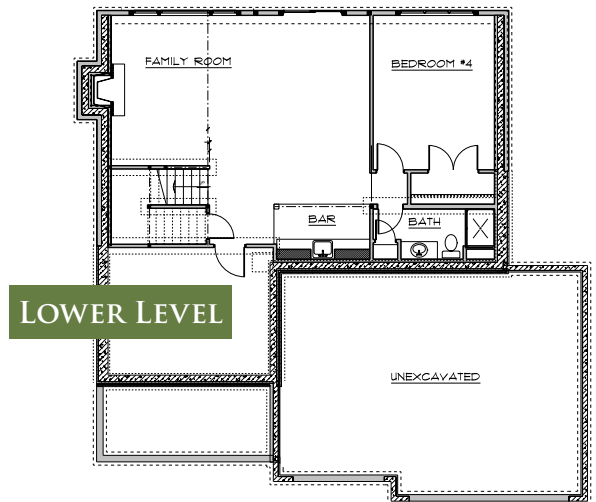
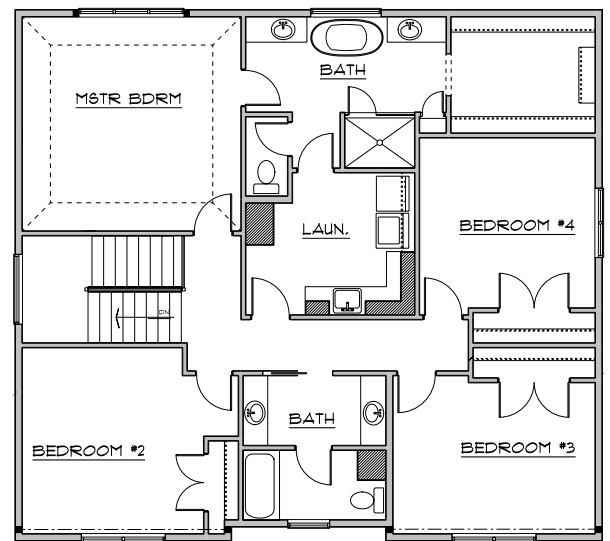
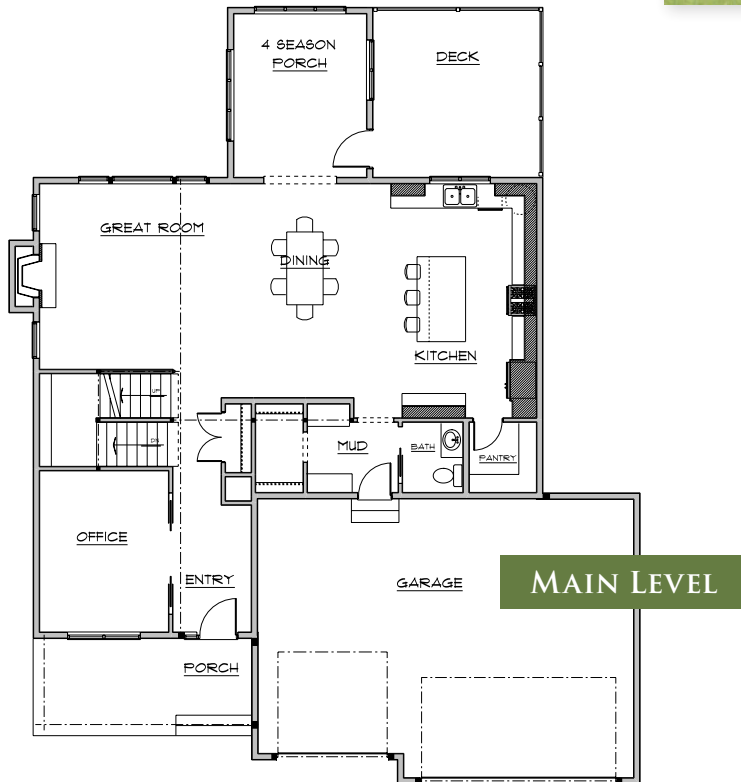


The Duxbury



- ◇ Open Main Level Floor Plan, Large Windows
- ◇ Great Room with Fireplace
- ◇ Spacious Kitchen with Center Island, Walk-in Pantry
- ◇ Flex Room for Home Office
- ◇ Master Bath Suite with Separate Tub and Tile Shower
- ◇ 4-5 Bedrooms, 2.5-3.5 Bathrooms
- ◇ 3-Car Garage, Front Porch
- ◇ Walk-out Lower Level – Optional Finish, Wet Bar, Fireplace
- ◇ Main/Upper Levels: 2,900 sq ft; Lower Level: 1,000 sq ft



Mark Gagnon, *Owner*
612-599-5376
Mark@NewmarkHomesMN.com

Newmark Homes
#BC008812
NewmarkHomesMN.com

UNIQUELY NEWMARK