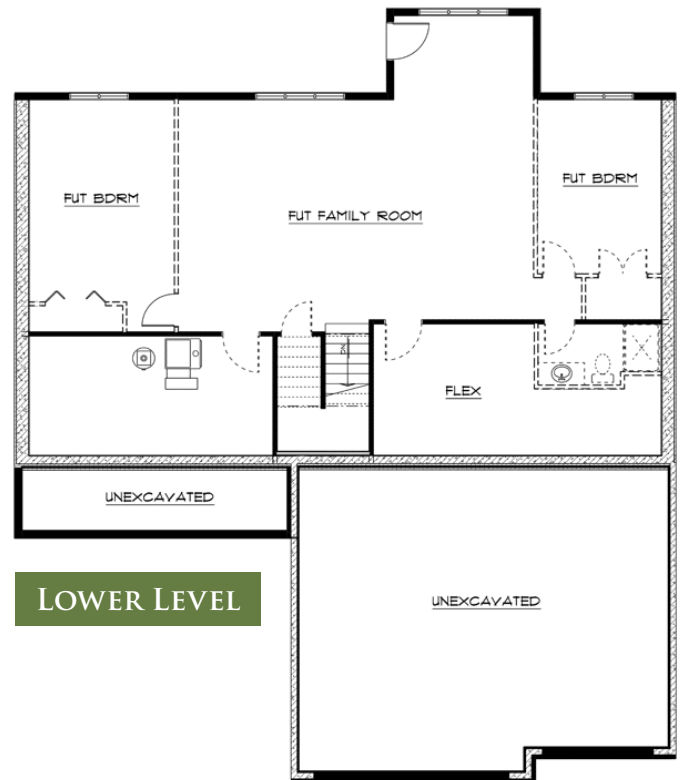




The Westport



- ◇ Open Main Level Floor Plan
- ◇ 2-4 Bedrooms & Laundry on the Main Level
- ◇ Flex Room Great for Bedroom, Home Office, or Sun Room

- ◇ 2.5-3 Bathrooms
- ◇ 3-Car Garage
- ◇ 1,786-3,250 Finished sq ft
- ◇ Walkout Lower Level – Optional Finish



Mark Gagnon, *Owner*
612-599-5376
Mark@NewmarkHomesMN.com

Newmark Homes
#BC008812
NewmarkHomesMN.com

UNIQUELY NEWMARK