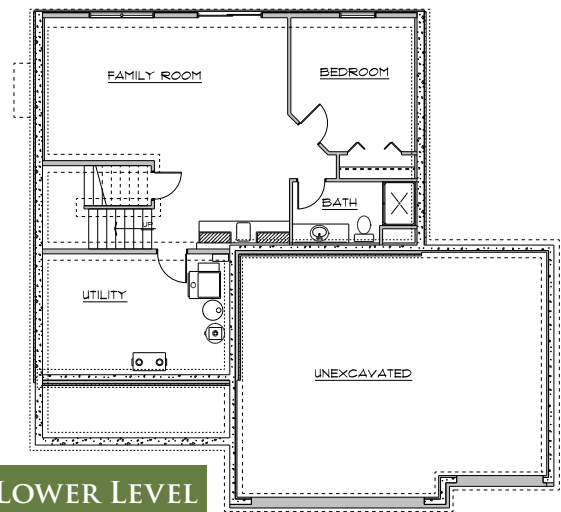
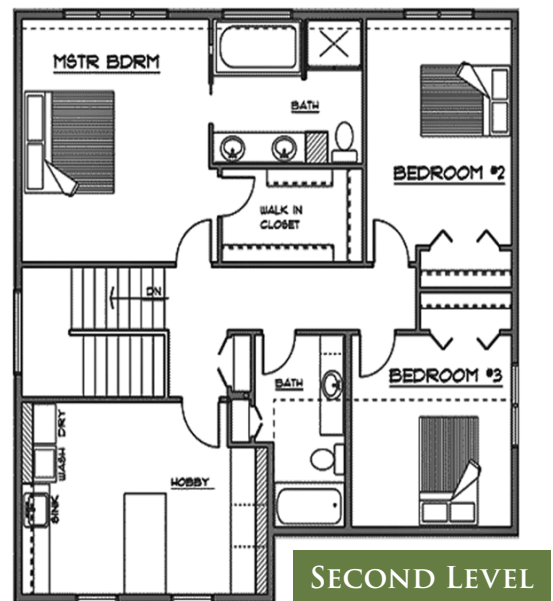
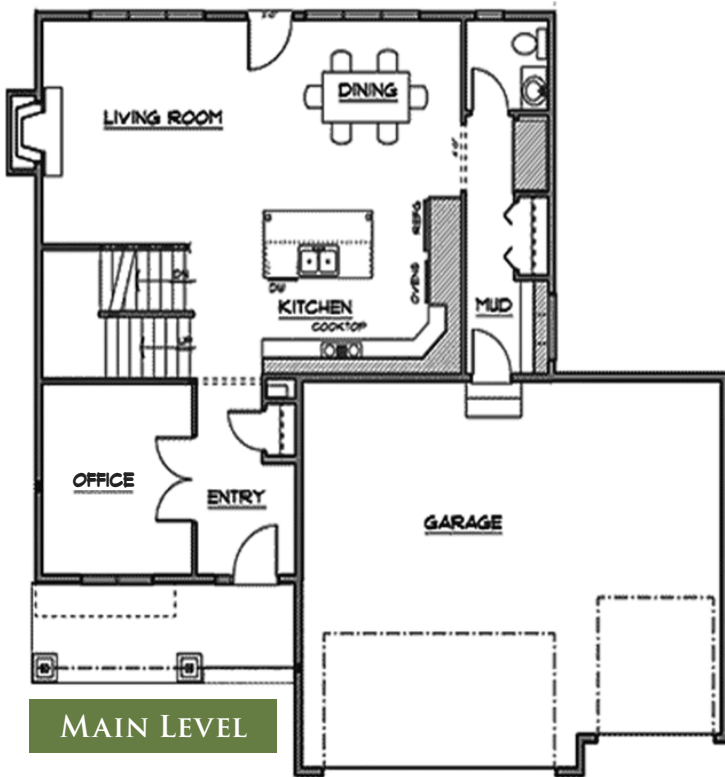
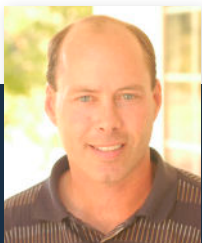




*The Wexford*



- ◇ Open Main Level Floor Plan
- ◇ 3 Bedrooms, Laundry, Office, and Craft Room
- ◇ Flex Room Great for Home Office
- ◇ 2.5–3.5 Bathrooms
- ◇ 3-Car Garage
- ◇ 2,200–3,200 Finished sq ft
- ◇ Walkout Lower Level – Optional Finish



Mark Gagnon, *Owner*  
612-599-5376  
Mark@NewmarkHomesMN.com

Newmark Homes  
#BC008812  
NewmarkHomesMN.com

**UNIQUELY NEWMARK**