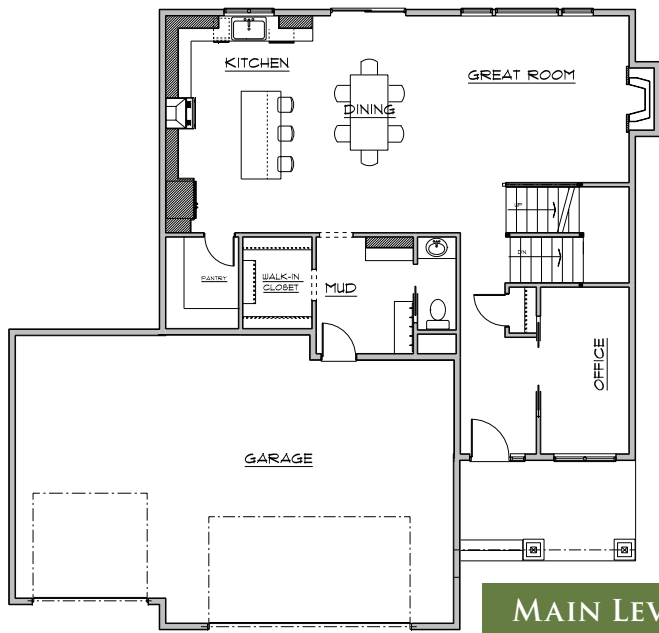




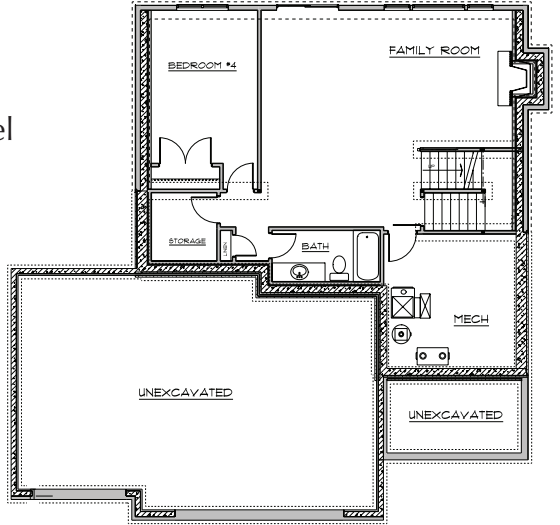
*The Wexford*



**MAIN LEVEL**

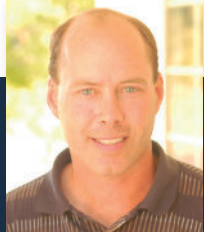


**SECOND LEVEL**



**LOWER LEVEL**

- ◇ Open Main Level Floor Plan
- ◇ Home Office, Great Room with Fireplace
- ◇ Kitchen with Center Island, Walk-In Pantry & Custom Shelving
- ◇ 3-4 Bedrooms, 2.5-3.5 Bathrooms
- ◇ Master Bath with Tile Shower, Soaking Tub, His & Her Vanities, Walk-In Closet & Custom Shelving
- ◇ Laundry on Upper Level
- ◇ 3-Car Garage
- ◇ Mud Room with Walk-In Closet, Drop Zone, and Bench & Coat Hooks
- ◇ 2,450-3,200 Finished sq ft
- ◇ Walkout Lower Level – Optional Finish



Mark Gagnon, *Owner*  
612-599-5376  
Mark@NewmarkHomesMN.com

Newmark Homes  
#BC008812  
NewmarkHomesMN.com

**UNIQUELY NEWMARK**